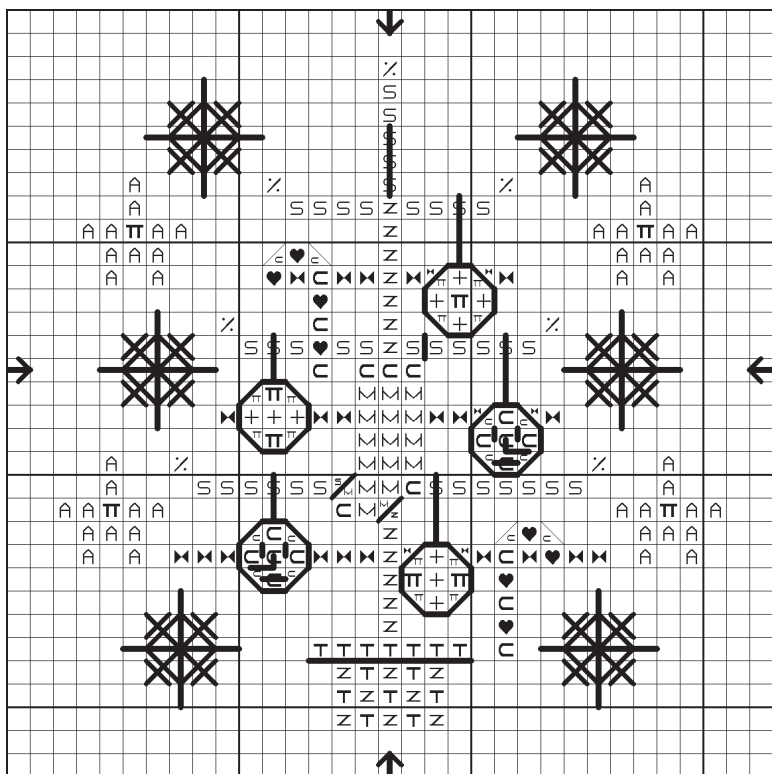


# WhimZi Feather Tree

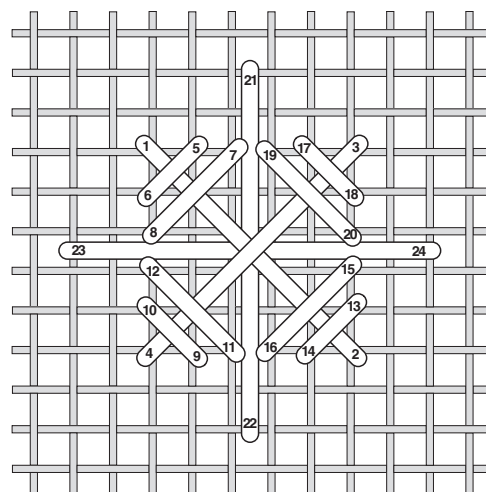


Each square on the graph equals 2 threads of fabric

©2005 Just Nan, Inc. by Nan Caldera  
All Rights Reserved

SYMBOL	DMC	SYMBOL	DMC
C	B5200	TT	816
S	163	M	824
+	309	None	900
None	310	T	3862
/.	321 Smyrna	SYMBOL	KREINIK #4 BRAID
M	500/3818	A	002HL
Z	801	SYMBOL	EMBELLISHMENT
♥	815	None	JNC44 Robin Bead

**FABRIC:** 28 CT Zweigart Cobblestone Cashel Linen or any dark linen that shows off the snowflakes.  
**DESIGN AREA:** 29H X 29W • 2" X 2" on 28 Ct



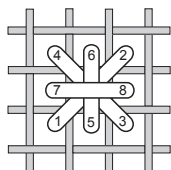
Crossed Rice Snowflake

**Fabric:** Stitch the design on either 28 or 32 count linen; both will fit the WhimZi frame.

**Instructions:** Work all cross stitches over 2 threads of linen using 2 strands of floss or 1 strand of #4 Braid. Backstitch with 1 strand. For the symbol with 2 colors, use 1 of each in the needle.

**Backstitching:** 310 for the basket and snowmen eyes and mouths; 900 for the snowmen noses; B5200 for the outline of the snowman ornaments; 816 for the snowmen hangers and outline of the red balls; 002HL #4 Braid for the hangers on the red balls and the stocking.

**Smyrna Cross:** Indicated by symbols on the graph. Use 2 strands of 321. →



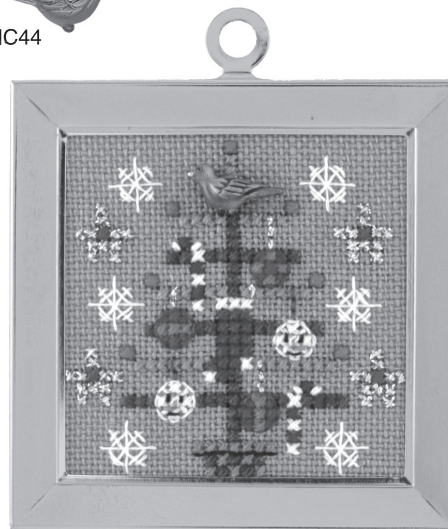
**Crossed Rice Snowflake:** Use 1 strand of B5200. Note that the final 2 legs pass under the snowflake.

**Just Nan Painted Robin Bead:** The vertical line in the top branch of the tree shows placement. Use 2 strands of 163; go through the bead twice to secure.

**WhimZi Frame:** Shown in a plain gold WhimZi frame (WFGP01). Instructions for mounting are packaged with each frame – it's easy; it's fast; it's the perfect finishing touch!



JNC44



WhimZi Frames available from  
Just Nan, Inc.